



JIPAM4800/4824

ADSL/ADSL2/2+ IP DSLAM

JIPAM4800 series IP DSLAM has 48/24 ports subscriber line interface with POTS splitter built-in achieved 1U height space saving design. JIPAM4800 came with unique bandwidth management, flow prioritization and data flow security control key feature. JIPAM4800 provided QoS (quality of service) capability to meet triple play (voice, data, video) requirement, support ADSL/ADSL2/ADSL2+ interface, stackable up to 8 JIPAM4800 can be cascaded. No matters in features, performance, and cost wise, JIPAM4800 is the best choice for NSP (network service provider)

Key Features

Excellent Management

- SNMP-based GUI EMS
- Local RS-232 CLI, and Ethernet SNMP/TELNET management
- Remote in-band SNMP/TELNET management
- Firmware upgradeable via FTP or TFTP

Advanced Functions

- Support 64*128 MAC address & 256 Multicast MAC address
- Support Static VLAN and Port-based VLAN-4096VLANs
- Firewall security by VLAN filtering, MAC Filtering, IP Filtering, Access Control List by MAC and IP address
- Traffic prioritization (802.1p)
- Traffic bandwidth management by MAC and IP address
- Uplink Aggregation (802.3ad)
- Future BRAS enhancement, support 802.1x, DHCP Relay option 82, PPPoA to PPPoE conversion, IGMP Proxy. Etc



Specification:

<p>System Features</p> <ul style="list-style-type: none"> •48/24 ports ADSL/ADSL2/ADSL2+ subscriber interface with built-in POTS Splitter •One 100BaseT MGNT+ Two 1000BaseT or one Giga LX Uplink/Subtend Interface(optional) •Stackable up to 8 units to be cascaded •Centronic 50 pin connector for Telco line in and out •8VCs per xDSL port •128 MAC address •256 Multicast MAC address •512 VLAN support •Packet size 64 byte to 1522 byte 	<p>ADSL/ADSL2/ADSL2+ Interface</p> <ul style="list-style-type: none"> •ADSL/ADSL2/ADSL2+: Upstream DMT data rate 32kb/s up to 1 Mbps •G.SHDSL: Symmetric transmission rate up to 2.23Mbps (2-wire) •Comply with ITU G.992.1(G.DMT),; G.DMT.bis; ITU G.992.2 (G.Lite); ANSI T1.413 issue 2; ITU G.994.1 (G.handshake) for ADSL, G.992.3 for ADSL2 •Extended power management capabilities to optimize power consumption for each application •Distance up to 18kft
	<p>Management</p> <ul style="list-style-type: none"> •Microsoft NT/SNMP-based GUI EMS •Local RS-232 CLI and Ethernet SNMP/TELNET management •Remote in-band SNMP/TELNET management •Firmware upgradeable via FTP or TFTP •Support SNMP v1, v2c, v3
<p>Dimension and Weight</p> <ul style="list-style-type: none"> •Dimension: 400mm(D)x440mm(W)x44mm(H) •Weight: 6.8kg 	<p>Protocols Support</p> <ul style="list-style-type: none"> •STP; IGMP snooping, GMRP, GVRP, LACP, SNMP/UDP/IP/MAC/Ethernet
<p>Power Source</p> <ul style="list-style-type: none"> •AC power model: 90VAC~240VAC, 50-60Hz •DC power model: -42VDC~ -56VDC •Power Consumption: 100 watts 	<p>Operating Requirements</p> <p>Operating Temperature:0° ~50°C Strage Temperature: -30° ~70°C Operating Humidity: 5% to 90% RH non-condensing</p>

Uplink upgradeable module interface

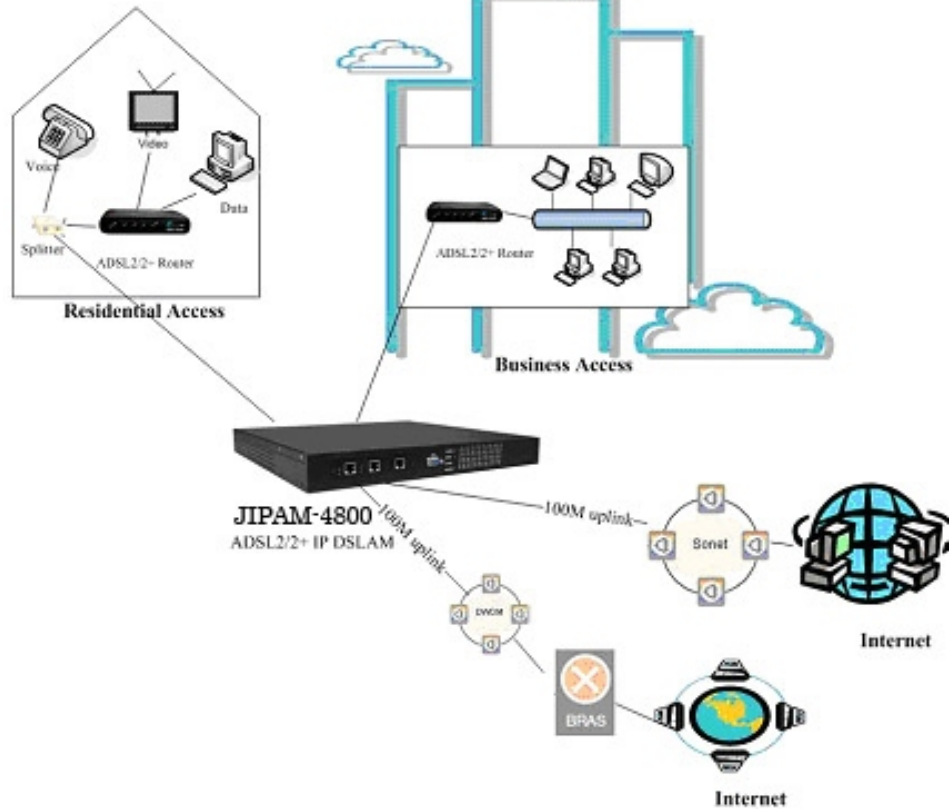


- 1*1000BaseT-MGNT + 2*1000BaseT



- 1*1000BaseT-MGNT +1*1000BaseT + 1*1000Fx(SX/LX/LH/ZX)

Application



Ordering information

MODEL	DESCRIPTION
JIPAM4800	48-port ADSL/ADSL2/2+ IP DSLAM
JIPAM4824	24-port ADSL/ADSL2/2+ IP DSLAM